

054379

RECEIVED  
LARAMIE COUNTY  
CHEYENNE, WY.

CERTIFIED LAND CORNER RECORDATION

'89 FEB 21 PM 1 10

DESCRIPTION OF CORNER EVIDENCE FOUND, AND ORIGINAL RECORD (if known)

S.22 S.23  
S.27 S.26  
T.17N., R.64 W.  
6th P.M.

Found 4"x14"x20" limestone broken with 2 notches & 2 notches on broken piece lying along side of 4"x14"x14" portion in ground.

G.L.O. Record: Limestone 20"x14"x14", 12" deep, 2 notches on South & East side set by Charles A. Caton, July 9, 1873.

DESCRIPTION OF MONUMENT AND ACCESSORIES ESTABLISHED TO PERPETUATE THE ORIGINAL LOCATION OF THIS CORNER:

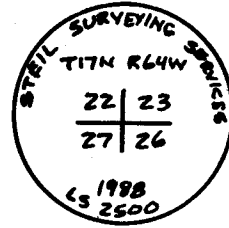
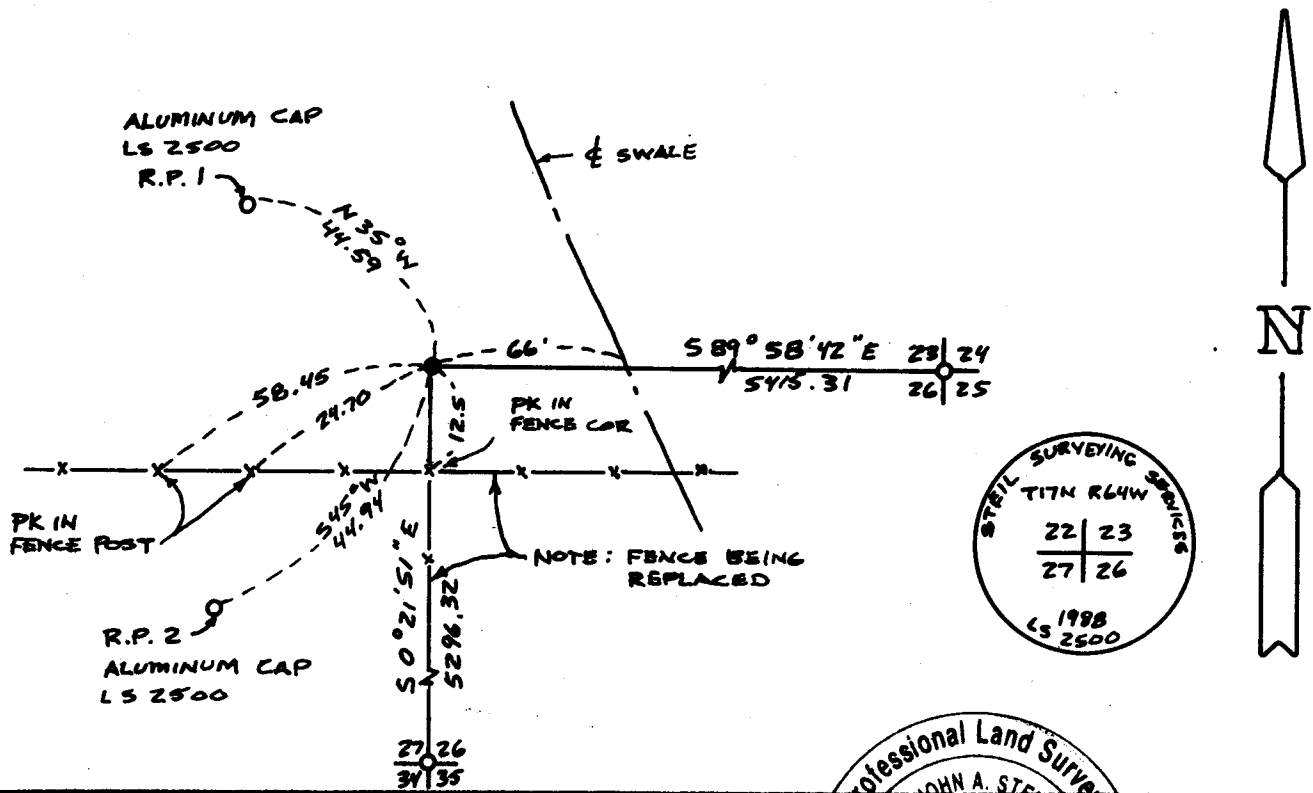
At the corner:

Reset broken stone with 2 1/2"x30" Aluminum Pipe & 3" Aluminum Cap stamped as shown below, projecting 2" above ground with mound of stone, buried original stone along side. Corner is 12.5' North of East West fence and on line with fence South.

Accessories :

See ties below.

SKETCH, WITH COURSE AND DISTANCE TO ADJACENT CORNER IF DETERMINED IN THIS SURVEY. (May Sketch or Paste Reproduction on Reverse Side.)



I, John A. Steil certify that I have carefully performed or reviewed the work done on the diagrammed corner as reported on this recordation form and approve the same.

Signature of Surveyor John A. Steil Date 2-16-89 Registration No. L.S. 2500

STATE OF WYOMING,  
Office of Clerk and Recorder,  
County of \_\_\_\_\_

This "corner record" was filed for record on the \_\_\_\_\_ day of \_\_\_\_\_, 19\_\_\_\_, was noted on the cross-index plat and is assigned page No. \_\_\_\_\_, in book No. \_\_\_\_\_

Janet C. Whitehead  
County Official

Cross Index No.	R-17	T. 17N	R. 64W	Mer 6th
				Mer.
				Mer.
				Mer.
				Mer.
				Mer.
				Mer.